



# Living Well North Tyneside

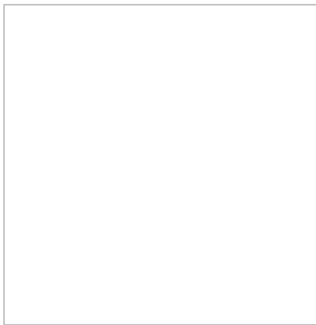
Supporting Health and Wellbeing

- Ground floor apartments have patio doors on to a semi-private patio area and upper apartments have juliette balconies
- A bright, comfortable shared lounge – the location for activities ranging from coffee mornings, social events and evening entertainment Three smaller, 'quiet' shared lounges for reading, hobbies, or just peaceful relaxation

For more information, contact Mayfield Park directly. If you are interested in moving to this scheme, please register with Homefinder [here](#)



[community](#)  
[accommodation](#) | [living](#) | [housing](#) | [retirement](#)



0191 643 6764



Mayfield Park  
Bristol Drive  
Wallsend  
UK  
NE28 9BF



<https://my.northtyneside.gov.uk/facility/7934>



# Sign Up for Living Well North Tyneside

Get all the latest news and information to help you to live well locally

[Subscribe Now](#)

